

LIGHTHOUSE EVENTS

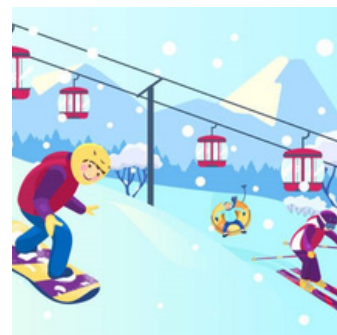


Our church partners with four other churches: Grand Avenue United Methodist Church, Christ the King Lutheran Church, Living Hope Lutheran Church, and Parkside Community United Church of Christ, all located in Port Washington and Saukville, to support our joint ecumenical initiative, Lighthouse Youth Ministry.

Lighthouse welcomes all middle school and high school youth to join the group anytime you are able! Here is the February activity:

Skiing/Snow Tubing at Sunburst - Sunday , February 26, 1:00-5:00

Come enjoy an afternoon of winter fun with friends as we hit the slopes together! We will meet at Lighthouse (513 W. Grand Ave. in Port) and carpool to Sunburst in Kewaskum. Students can choose between snow tubing, skiing, or snowboarding and Lighthouse will cover the rental/lift costs. Please come dressed for the weather and bring along money for snacks if you would like.



Thank you for all of the Birthday Kit Donations!

We want to extend a huge THANK YOU to everyone who donated supplies for the birthday kits! All five congregations rose to the challenge and helped us assemble 150 kits. The kits have been distributed to both the Port Washington and Saukville food pantries and were received with great appreciation!

Plastic Egg Donations Needed for Upcoming Project

Lighthouse youth will be doing an "Egg My Yard" fundraiser for Easter (look for more details to come in the March newsletter). To help us prepare for this fundraiser, we are looking for anyone with plastic Easter eggs that you no longer use. You may drop off your eggs at church anytime this month. Thank you!



Have questions or want to RSVP to any of these events?

Please contact Lighthouse Director Christin Flucke at (262) 483-9582 or email christin.flucke@lighthouseyouth.org

Also, stay up to date on any schedule changes as well as event reminders by joining the Lighthouse message group on the Remind app.

Simply text "pwseym" to 81010 and follow the directions to join if you haven't already!